

## PAINTED/DECORATED BOXES



Heilbrunn Timeline of Art History – The Met

<https://www.metmuseum.org/toah/works-of-art/1976.327/>

Painted box for game pieces – ca 1300 – Upper Rhine region of Germany

Medium – wood, polychromy and metal mounts

Dimensions – 7.9 x 26.4 x 9.2 cm

The animals that enliven the decoration of this box includes a unicorn, an elephant, a lion and a dog. The roundels in which they are placed echo the form of medieval game pieces, which likely were once held inside and were most likely disc shaped pieces for tric trac, a game similar to backgammon. Along the top, the repeating motif of dogs' heads can be read in either yellow or green.







Minnekästchen or document casket – southwestern Germany – it looks like pyrography

<http://www.larsdatter.com/boxes-wood-paint.htm>



Hessen 14<sup>th</sup> century – casket with ornamental carvings and remnants of painted heraldry

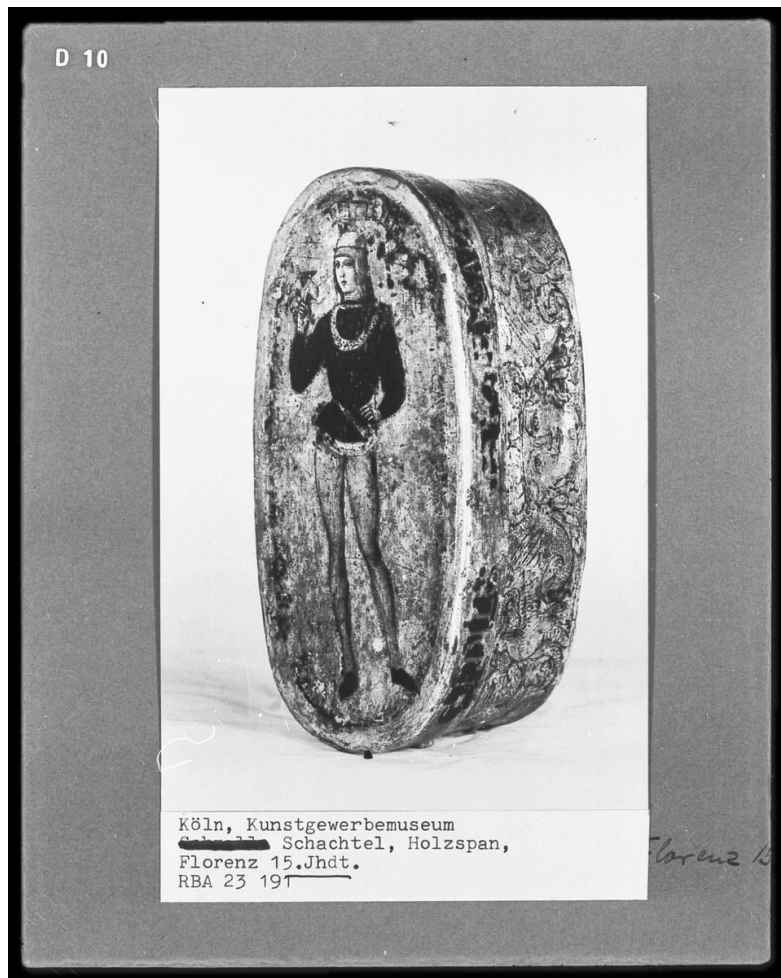
<http://www.larsdatter.com/boxes-wood-paint.htm>





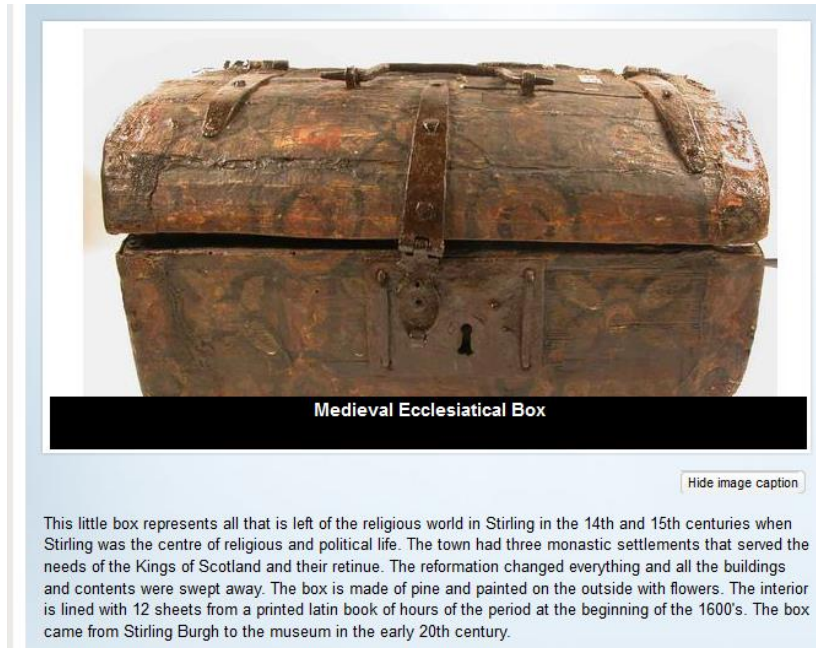
Painted and gilt coffer – 14<sup>th</sup> century

<http://www.larsdatter.com/boxes-wood-paint.htm>



Box with a figure of a young man – Florence 15<sup>th</sup> century

<http://previous.bildindex.de/bilder/MI01682d10a.jpg>



<http://www.bbc.co.uk/ahistoryoftheworld/objects/fcwlbFXfQwSOSGF5T9V1aQ>

#### **FURTHER INFORMATION:**

<https://www.scaramangashop.co.uk/Fashion-and-Furniture-Blog/history-wooden-chests-storage-boxes/>

#### **INSTRUCTIONS**

- Personal preference – sand box and undercoat with gesso or other type of preparation product.
- Draw design onto box – can be traced and applied using carbon paper or any other method you feel comfortable with.
- Paint the box – I find using a smaller brush and dabbing the paint on is better as sometimes the item requires additional coats if it is brushed on in strokes.
- You can finish the inside of the box by gluing felt to the inside. Using a spray adhesive is better as it does not cause clumps of glue under the felt or seepage through the felt.
- Finish off with a coat of varnish to protect the paint surface. I use a spray varnish as accidents can happen with the brush on varnish and smears the paint (talking from experience).